

# Costs of Electronic Payments in K-12 Schools

Issue Spotlight

# Table of Contents

<b>1. Executive Summary</b> .....	<b>3</b>
Key Findings .....	4
<b>2. Background</b> .....	<b>6</b>
2.1 School Lunch Payments .....	7
2.2 Relevant Federal Authorities.....	8
<b>3. Market Overview</b> .....	<b>10</b>
3.1 School District Contracts.....	12
3.2 Payment Platform Features and Fees .....	14
3.2.1 Product Features.....	14
3.2.2 Product Fees .....	14
3.2.3 Costs of Electronic Transactions .....	15
<b>4. Sample Findings</b> .....	<b>16</b>
4.1 Sample Market Composition.....	16
4.2 Fee Rates.....	17
4.2.1 Transaction Fees .....	17
4.2.2 Other Fees.....	18
<b>5. Costs and Difficulties for Consumers</b> .....	<b>20</b>
5.1 Inaccessible Fee-Free Options .....	20
5.2 Difficulty Canceling Automatic Payments .....	22
5.3 Difficulty Accessing Timely Refunds.....	22
5.4 Fee Burden.....	23
<b>6. Conclusion</b> .....	<b>27</b>
<b>Appendix A: Methodology</b> .....	<b>28</b>

Sample Construction .....	28
Variables .....	28
<b>Appendix B: Ownership Structures of Payment Processors .....</b>	<b>31</b>

# 1. Executive Summary

As of Fall 2023, more than 52 million students were enrolled at public schools throughout the United States.<sup>1</sup> Over a school year, students incur a series of expenses for school meals, bus passes, after-school programs, and technology and materials needed for class, among other costs. As the broader payments ecosystem continues shifting towards more digital options in the wake of the COVID-19 pandemic, school districts are increasingly contracting with payment processing companies to provide an avenue for families to pay school-related expenses online. While convenient for both families and school districts, electronic payment options present new costs and challenges for the families using them.

For example, in many schools, families can electronically load funds into an account that students can draw from to pay for school meals. Although federal policy specifies that schools must provide a fee-free option for school lunch payment, many payment processors charge a transaction fee each time a user electronically adds money to a student's school cafeteria account.<sup>2</sup> Payment processing companies have broad control over fee rates, though payment companies maintain that school districts have the opportunity to negotiate these rates during the contracting process. Some districts cover part or all of this fee, but it is frequently paid by the families who make electronic payments. Over the course of a school year, transaction fees for electronic payments in and outside of the lunchroom can significantly increase a family's total spending on school-related costs and may disproportionately impact families with lower incomes.<sup>3</sup>

To better understand the emergence of electronic payment processors in K-12 schools, the CFPB analyzed publicly available information from the 300 largest public school districts in the U.S. and held unstructured interviews with public school officials and companies offering these payment platforms. The sample of school districts covers more than 16.7 million students across more than 25,000 schools. This spotlight highlights average costs and potential risks for families using electronic payment platforms to add money to their child's school lunch account and

---

<sup>1</sup> U.S. Department of Education, Institute of Education Sciences, National Center for Education Statistics, *Enrollment in public elementary and secondary schools*, (retrieved April 2024), [https://nces.ed.gov/programs/digest/d13/tables/dt13\\_203.20.asp](https://nces.ed.gov/programs/digest/d13/tables/dt13_203.20.asp).

<sup>2</sup> The requirement extends to schools participating in the U.S. Department of Agriculture's National School Meal Program. As of February 2024, the National School Lunch Program served 30 million students daily in public and nonprofit private schools, and residential child care institutions, *See* U.S. Department of Agriculture, Food and Nutrition Service, National School Lunch Program, (retrieved June 2024), <https://www.fns.usda.gov/nslp>; *See* U.S. Department of Agriculture, Food and Nutrition Service, Child Nutrition Tables, (last updated February 2024, retrieved February 2024), <https://www.fns.usda.gov/pd/child-nutrition-tables>.

<sup>3</sup> Consumer Financial Protection Bureau, *Supervisory Highlights: Junk Fees Update Special Edition, Issue 31, Fall 2023* (Oct. 2023), <https://www.consumerfinance.gov/data-research/research-reports/supervisory-highlights-junk-fees-update-special-edition-issue-31-fall-2023/>, at 15.

reviews the market size and landscape of companies offering them, building upon initial observations referenced in the Fall 2023 edition of Supervisory Highlights.<sup>4</sup>

## Key Findings

- **School districts are increasingly shifting to cashless operations.** This shift is partly to prioritize administrative savings and efficiency and partly due to a larger shift towards digital payments. Many schools, including 87 percent of sampled school districts, contract with payment processors to enable electronic payments for expenses like school lunch costs.
- **School lunch payment processors typically charge fees to add money to a student's school lunch account, which collectively can cost families upwards of \$100 million each year.** The CFPB observed that school lunch payment processors within the sample levy transaction fees of \$2.37 or, separately, 4.4 percent of the total transaction, on average, each time money is added into a payment account. Families may also incur similar transaction fees when paying for other school-related expenses online. Previously, the CFPB's Fall 2023 edition of Supervisory Highlights noted that payment processors have maintained payment platforms on which consumers may have paid fees that they would not have paid had the consumers understood that they were entitled to free options.
- **Over the course of a school year, families with children eligible for means-tested reduced price lunch programs may send \$0.60 to payment processors for each \$1 they spend on school lunch.** Families making online payments every other week, an industry-estimated frequency that CFPB interviews indicate may be conservative in some cases, can incur as much as \$42 in transaction fees over the course of a school year. For families paying full price for lunch, every \$1 they spend to pay for their child's lunch incurs \$0.08 in transaction fees. For those paying reduced price for lunch, this ratio grows to \$0.60 for every \$1 spent. Additional fees may further increase the cost of using electronic payment platforms.
- **Fee-free options may not be meaningfully available to all families, leading to fees that can be burdensome and difficult to avoid, particularly for low-income families.** These fees, which are most often a flat amount, may be disproportionately burdening lower-income families making smaller payments more frequently, compared to families who can afford to load a substantial amount into their child's account at one time. Both school districts and processors frequently fail to post the availability of free payment methods, and further, free options may be more burdensome than electronic options.

---

<sup>4</sup> Ibid.

- **Three companies (MySchoolBucks, SchoolCafé, and LINQ Connect) dominate the school lunch payments market.** While more than 20 unique companies offer these services to school districts nationwide, 67 percent of enrolled students in the sample are served by just three market leaders.
- **Complex payment processor company structures and contracts may insulate companies from competition and make school districts less likely to negotiate fees for these services.** For school districts considering contracts, payment platforms may be just one element of a larger contract for back-end school nutrition or information management services.
- **Consumers cannot choose their payment platform.** Because contracts are determined at a school-district level, families have no choice over which company they must use to add funds into online student lunch accounts. As a result, it may be especially difficult for them to avoid harmful practices, including those that may violate federal consumer protection law.

## 2. Background

As digital payments have become increasingly popular across sectors, more and more school districts around the country are offering parents and caregivers the ability to pay school-related expenses, including for field trips, athletics, and school lunches, online.<sup>5</sup>

Families can typically access online payment portals through a link on their school district website, or through the company's own webpage or app. Depending on the district, schools may partner with one payment processor for all electronic payments or may have one platform for school meal payments, for example, and another for other school-related payments.

School districts contract with third-party payment processing companies with the expectation that they will lower school district processing costs and increase administrative efficiency, accuracy, and security.<sup>6</sup> For example, digital payment information can automatically be integrated with student information, potentially minimizing errors from manually applying funds to a student's account balance. Many payment processors also offer electronic solutions that purport to lessen administrative burden on school district staff, such as automated messaging features to parents and caregivers about unpaid academic fees or negative lunch account balances.

Despite these perceived benefits, there are also risks related to accepting electronic payments. For example, families typically have to pay fees to make electronic transactions or may have difficulty accessing timely refunds of unspent funds. Some school districts may also limit their acceptance of other payment methods like cash, even though the ability to make cash payments may remain preferable or necessary for some families.<sup>7</sup>

Due to both the administrative efficiencies offered by online payment platforms and the high volume of daily transactions, school lunch programs present a clear opportunity to explore online payments in K-12 schools. This issue spotlight primarily focuses on the companies

---

<sup>5</sup> Sometimes school districts will partner with multiple companies, often having one contract with a payment processor that covers school lunch and other food-related payments and a separate contract with a different payment processor that covers other academic or extracurricular fees.

<sup>6</sup> The CFPB conducted a series of unstructured interviews with school district officials around the country from February through March 2024. In these interviews, school district officials mentioned consistently choosing to contract with payment processors that enable online payments for school lunches due to the perceived increase in efficiency, accuracy, and security online platforms would provide. School districts officials indicated they may contract with payment processors to alleviate the need for employees to handle cash or checks and mitigate the perceived risk of fraud or theft.

<sup>7</sup> Federal Reserve Bank of Boston, *A fatal cash crash? Conditions were ripe for it after the pandemic hit, but it didn't happen*, Lindsay, Jay, (November 2, 2023), <https://www.bostonfed.org/news-and-events/news/2023/11/cash-crash-pandemic-increasing-credit-card-use-diary-of-consumer-payment-choice.aspx>.

processing electronic payments for school lunches and the potential risks they pose to school districts and families.

## 2.1 School Lunch Payments

Most public schools participate in the National School Lunch Program (NSLP) and the School Breakfast Program (SBP), which are both federally assisted meal programs from the U.S. Department of Agriculture (USDA) that provide low-cost, or free meals to K-12 students.<sup>8</sup> Each day, on average, 19 million students participate in the free lunch program, 1.1 million in the reduced price lunch program, and 8.5 million in the full-price lunch program at public and private schools throughout the country.<sup>9</sup> Families with incomes at or below 130 percent of the federal poverty line are eligible for free lunch, and those with incomes between 130 and 185 percent are eligible for reduced price lunch.<sup>10</sup>

Participation in the free and reduced price meal programs may not always fully reflect a student's ability to afford food or cover the number of meals needed in a day.<sup>11</sup> As such, students who need lower-cost lunch options but do not participate in the free or reduced price meal programs as well as those who receive free or reduced price meals may still need to pay for food at school, potentially using a payment platform.

Nationwide, the average price of a middle school lunch is \$3.00, or \$0.40 for those participating in the reduced price lunch program.<sup>12</sup> A family with two children paying full price for lunch at

---

<sup>8</sup> 88 percent of public schools in the country participate in the USDA School Meal Program, as of October 2022, estimated by the U.S. Department of Education's National Center for Education Statistics in their School Pulse Survey. The same survey found that 69 percent of public schools report a majority of their students as participating in the USDA School Meal Program. See National Center for Education Statistics, *School Pulse Panel*, (retrieved February 2024), <https://ies.ed.gov/schoolsurvey/spp/>; U.S. Department of Agriculture, Food and Nutrition Service, *National School Lunch Program (NSLP) Fact Sheet*, (last updated April 2023, retrieved February 2024), <https://www.fns.usda.gov/nslp/nslp-fact-sheet>.

<sup>9</sup> As of 2022, around 90,000 schools participated in the National School Lunch Program and/or the School Breakfast Program, with many schools participating in both. Of participating schools, 4% of those participating in the NSLP are private schools and 3% of those participating in SBP are private. See U.S. Department of Agriculture, Food and Nutrition Service, *Child Nutrition Tables*, (last updated February 2024, retrieved February 2024), <https://www.fns.usda.gov/pd/child-nutrition-tables>; Congressional Research Service, *School Meals and Other Child Nutrition Programs: Background and Funding*, (accessed Jun. 12, 2024), <https://crsreports.congress.gov/product/pdf/R/R46234>.

<sup>10</sup> U.S. Department of Agriculture, Economic Research Service, *Child Nutrition Programs: National School Lunch Program*, (accessed Mar. 4, 2024), <https://www.ers.usda.gov/topics/food-nutrition-assistance/child-nutrition-programs/national-school-lunch-program/>.

<sup>11</sup> By some estimates, eligibility requirements may fail to account for families' complex socioeconomic realities, such as debt burdens, health and medication costs, and the high cost of living in many urban areas. See Pearce, Allie; Alleyne, Akilah; Neal, Anona, *5 States Addressing Child Hunger and Food Insecurity With Free School Meals for All*, <https://www.americanprogress.org/article/5-states-addressing-child-hunger-and-food-insecurity-with-free-school-meals-for-all>.

<sup>12</sup> School Nutrition Association, *School Meal Statistics*, (accessed Mar. 2024), <https://schoolnutrition.org/about-school-meals/school-meal-statistics>.



school every day can expect to spend, on average, \$1,080 on school lunches over the course of a school year.<sup>13</sup> Given these averages, and daily participation in the NSLP, the CFPB estimates that participating schools across the country are paid approximately \$26 million every day and \$4.68 billion every year by families purchasing their child’s first lunch.<sup>14</sup> Schools may be collecting more as students purchase additional meals or *a la carte* items.

The school district’s “school food authority” (SFA) manages its school nutrition program and determines what payment options are available to facilitate these transactions.<sup>15</sup> While there is no official market-wide estimate, one payment processor estimated that as many as a third of students at school districts with an online payment processor pay for lunch using funds electronically loaded to their account.<sup>16</sup> Interviews with school district administrators suggest that online payment options are popular among both families and school districts for their perceived security and convenience.<sup>17</sup>

## 2.2 Relevant Federal Authorities

Nonbank covered persons, including online payment processors, are generally subject to the CFPB’s regulatory and enforcement authority and must comply with federal consumer financial protection laws.<sup>18</sup> Particularly relevant is the Consumer Financial Protection Act’s prohibition of unfair, deceptive, and abusive practices.<sup>19</sup> The CFPB’s Fall 2023 edition of Supervisory

---

<sup>13</sup> The average cost estimate is based on the length of an average school year, which is 180 days. See U.S. Department of Education, Institute of Education Sciences, National Center for Education Statistics, *Average number of hours in the school day and average number of days in the school year for public schools*, (last updated 2007-08, retrieved May 2024), [https://nces.ed.gov/surveys/sass/tables/sass0708\\_035\\_sis.asp](https://nces.ed.gov/surveys/sass/tables/sass0708_035_sis.asp).

<sup>14</sup> Based on averages, 8.5 million students paying full price (\$3.00) for school lunch spend about \$25.5 million daily on school lunch. 1.1 million students paying reduced price (\$0.40) for school lunch spend about \$440,000 daily on school lunch. Together, this amounts to just over \$25.9 million. This estimate does not include any costs for additional lunches purchased or *a la carte* items, which are generally not reimbursable for schools participating in the USDA School Meal Program and are not counted in daily participation totals.

<sup>15</sup> A “school food authority” is the governing body responsible for the administration of one or more schools and has the legal authority to operate the schools’ nutrition program(s). In this report, “school district” and “school food authority” or “SFA” may be used interchangeably when describing the relationship between school district entities and the companies they contract with to provide online payment capabilities. See 7 C.F.R. § 210.2 “School food authority,” (accessed Feb. 2024), <https://www.ecfr.gov/current/title-7/subtitle-B/chapter-II/subchapter-A/part-210/subpart-A/section-210.2>.

<sup>16</sup> In a March 2024 CFPB market monitoring meeting with a payment processor, company officials indicated that as many as a third of students pay for lunch using funds electronically loaded to their account.

<sup>17</sup> The CFPB conducted a series of unstructured interviews with school district officials around the country from February through March 2024.

<sup>18</sup> See 12 U.S.C. 5481(15)(A)(vii). 12 U.S.C. 5481(6) defines “covered person” as (A) any person that engages in offering or providing a consumer financial product or service; and (B) any affiliate of a person described in subparagraph A if such affiliate acts as a service provider to such person.

<sup>19</sup> CFPA section 1036(a)(1)(B), 12 U.S.C. 5536(a)(1)(B). In CFPA section 1031, Congress prohibited covered persons and service providers from committing or engaging in unfair, deceptive, or abusive acts or practices in connection with the offering or provision of consumer financial products or services. CFPA sections 1031(c) & (d) set forth the general standard for determining whether an act or practice is unfair or abusive. See 12 U.S.C. §§ 5531(c) & (d).

Highlights noted that certain covered persons maintained online school lunch payment platforms, and that certain practices related to the platforms may not comply with federal consumer financial protection laws.<sup>20</sup> Although local rules and state laws may govern types of school-related purchases, other aspects of federal law are also relevant to school lunch payments.

The U.S. Department of Agriculture (USDA) has long established that children participating in school nutrition programs “shall not be charged any additional fees” for the services provided in conjunction with the delivery of school lunch benefits.<sup>21</sup> In this policy, the USDA specified, “by charging fees in addition to the regular reduced price or paid meal charge, a school is limiting access to the program and imposing an additional criterion for participation.”<sup>22</sup> In 2014, the USDA published a policy memorandum that specifically addressed online fees in school meal programs, stating that school food authorities can charge a fee for online services, but only if they also offer a method for households to add money to the account that doesn’t incur any additional fees. In the policy, the USDA suggests that schools accept money at the school food service office or cash payments at the point of service as fee-free options.<sup>23</sup> In 2017, the USDA issued another policy reiterating this requirement and stating that school food authorities cannot exclusively use online payment systems.<sup>24</sup> The 2017 guidance also requires school food authorities to notify families of all available payment options, including any associated fees. In the last seven years since the USDA published this guidance, the popularity of digital payments has grown significantly across sectors.<sup>25</sup>

---

<sup>20</sup> Consumer Financial Protection Bureau, *Supervisory Highlights: Junk Fees Update Special Edition, Issue 31, Fall 2023* (Oct. 2023), <https://www.consumerfinance.gov/data-research/research-reports/supervisory-highlights-junk-fees-update-special-edition-issue-31-fall-2023/>, at 15.

<sup>21</sup> FNS Instruction 782-6 Rev. 1, Fees for Lunchroom Services (U.S.D.A. 2010), <https://www.fns.usda.gov/cn/fees-lunchroom-services>.

<sup>22</sup> *Ibid.*

<sup>23</sup> U.S. Department of Agriculture, Food and Nutrition Service, *Memo SP02-2015: Online Fees in the School Meal Programs*, (Oct. 8, 2014), <https://www.fns.usda.gov/cn/online-fees-school-meal-programs>.

<sup>24</sup> U.S. Department of Agriculture, Food and Nutrition Service, *Memo SP23-2017: Unpaid Meal Charges: Guidance and Q&A*, (March 23, 2017), <https://www.fns.usda.gov/cn/unpaid-meal-charges-guidance-qas>.

<sup>25</sup> While cash remained the third-most-used payment instrument in 2023, its use as a payment instrument has dropped 48 percent since the first iteration of the Federal Reserve’s Diary of Consumer Payment Choice in 2016. In 2023, consumers continued to increase the share of payments made online or remotely. See The Federal Reserve, *2024 Findings from the Diary of Consumer Payment Choice*, Bayeh, Berhan; Cubides, Emily; and, O’Brien, Shaun, <https://www.frb-services.org/binaries/content/assets/crsocms/news/research/2024-diary-of-consumer-payment-choice.pdf>.

# 3. Market Overview

The market of K-12 payment processors overlaps with two related industries: general payment processing and student information management software. Broadly, the top K-12 payment platforms are offered by subsidiaries of large financial institutions and by companies specializing in comprehensive student data management software. Among companies that specialize in school lunch payments, the same parent holding company may operate multiple payment platforms (see Figure 1). In recent years, many smaller companies offering the same services have been acquired by larger firms or have begun offering compatible products.

Many school payment processors, which may appear to occupy a niche industry and may lack broader name recognition, are owned by, or serve, significantly larger institutions with robust revenue streams and compliance capabilities.<sup>26</sup> Eight of the 20 K-12 payment processors identified by the CFPB are affiliated with larger companies that offer multiple school lunch payment products, creating a potentially misleading sense of product variety and market competition.<sup>27</sup> Generally, the leading K-12 payment platforms are well connected to large companies in the payments and financial services sectors. For example, five are operated by independent sales organizations<sup>28</sup> that provide payment processing services and generate revenue for Wells Fargo, a company that is also dominant in the higher education payments market.<sup>29</sup>

---

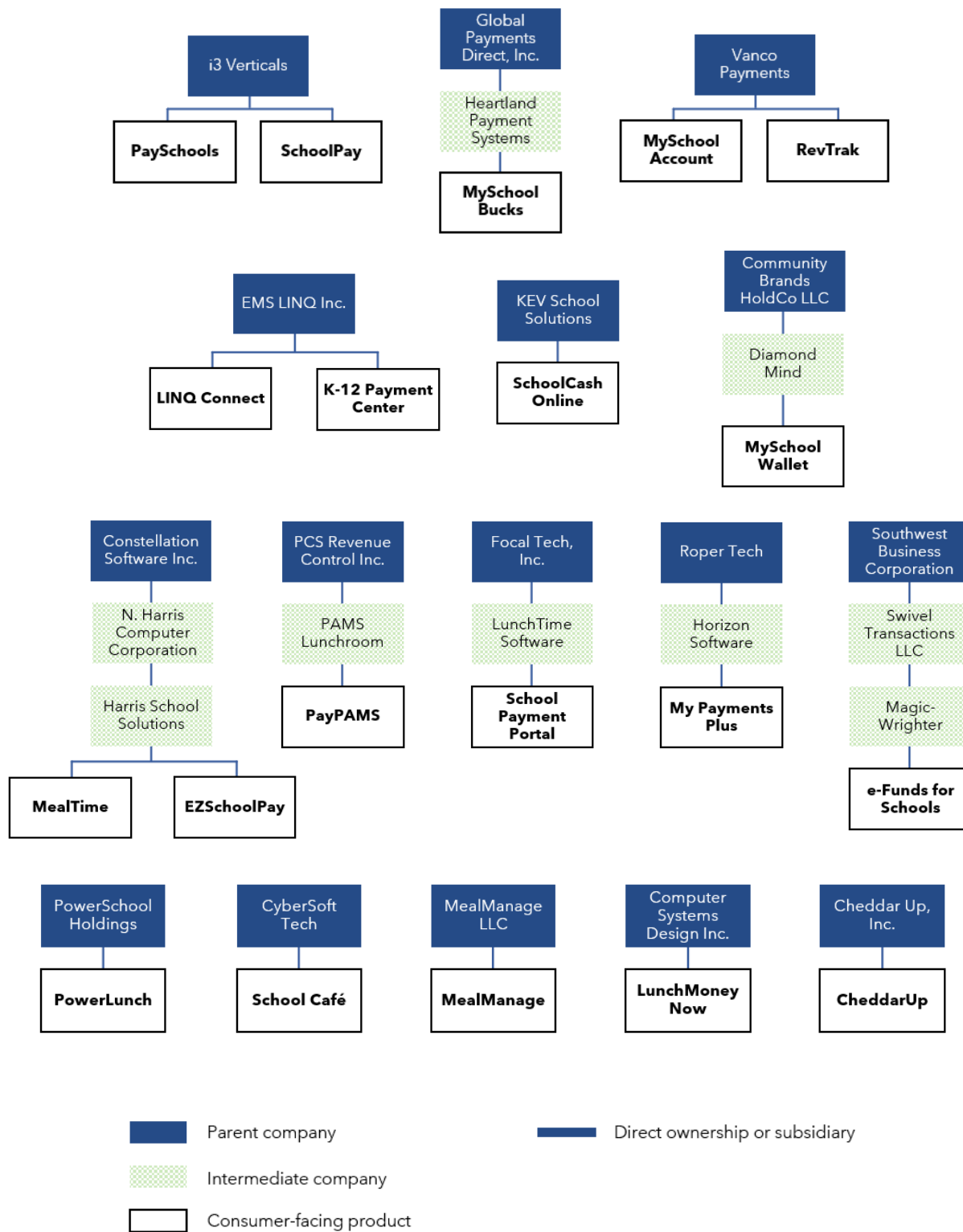
<sup>26</sup> See Appendix B for additional information on company ownership structures.

<sup>27</sup> For example, EMS LINQ, Inc. operates both LINQ Connect and K-12 Payment Center. I3 Verticals operates both PaySchools and SchoolPay. Vanco Payments operates both MySchoolAccount and RevTrak. Harris School Solutions, which is a subsidiary of Constellation Software Inc. (a large holdings conglomerate), operates both MealTime and EZSchoolPay. See Appendix B for additional information on company ownership structures.

<sup>28</sup> Independent Sales Organizations (ISOs) provide payment processing services on behalf of a financial institution that acquires funds from a transaction. ISOs help the financial institutions they serve generate revenue through acquirer mark-ups, ACH transaction fees, and other fees charged for facilitating a transaction. ISOs are also called Merchant Service Providers (MSPs). For more information, see U.S. Department of the Treasury, Office of the Comptroller of the Currency, *Comptroller's Handbook: Merchant Processing, Safety and Soundness (Version 1.0)*, (Aug. 2014), <https://www.occ.treas.gov/publications-and-resources/publications/comptrollers-handbook/files/merchant-processing/pub-ch-merchant-processing.pdf>.

<sup>29</sup> MySchoolBucks is a product of Heartland Payment Systems, which is a registered ISO of Wells Fargo and the Bancorp Bank, and a subsidiary of Global Payments Direct, Inc., which is an ISO of Wells Fargo and BMO Harris Bank. Wells Fargo also has payment relations with four other platforms: PaySchools and SchoolPay, which are products of i3 Verticals, a registered ISO of Wells Fargo and several other banks; and MySchoolAccount and RevTrak, which are products of Vanco Payments, a registered ISO solely of Wells Fargo. (See Appendix B for more information). Wells Fargo is also a significant player in the higher education payment processing space, generating revenue from ISOs that help colleges embed tuition payment plan processing functions into student portals such as Nelnet, TouchNet (Heartland), and ECSI (Heartland). See Consumer Financial Protection Bureau, *Tuition Payment Plans in Higher Education*, (Sep. 2023), [https://files.consumerfinance.gov/f/documents/cfpb\\_tuition\\_payment\\_plan\\_report\\_2023-09.pdf](https://files.consumerfinance.gov/f/documents/cfpb_tuition_payment_plan_report_2023-09.pdf).

**FIGURE 1: THE MARKET FOR SCHOOL LUNCH PAYMENT PROCESSORS**



## 3.1 School District Contracts

School districts enter into contracts with payment processors to help manage a number of financial and administrative responsibilities. In addition to providing user-facing payment portals, many payment processors also provide back-end services like point-of-sale software for school cafeteria systems, HR management systems, and student information systems for collecting applications for free or reduced price lunch. All these services are typically acquired under one contract, which determines what the school district pays for the services provided.

User-facing payment platforms are governed by these contracts, which also set the rates for fees charged to end users. Unlike other elements of these larger contracts, school districts typically do not have to pay to enable electronic transactions via an affiliated payment platform. Since payment processing companies have a fee-based revenue model, much of their revenue comes in the form of transaction fees.

Although school districts may experience cost savings or efficiencies of their own when contracting with processors, those financial benefits are not usually passed directly to families. Transaction fees are sometimes fully paid by a school district.<sup>30</sup> The USDA has a policy explicitly allowing school districts to cover transaction fees on families' behalf using the funds in their nonprofit school food service account.<sup>31</sup> However, transaction fees are more commonly paid in part or full by families themselves.<sup>32</sup> The CFPB did not encounter any examples of school

---

<sup>30</sup> District of Columbia Public Schools partners with LINQ Connect to enable families to make school lunch-related payments without transaction fees. The school district subsidizes the full fee that would otherwise be paid by individual families. See District of Columbia Public Schools, “Meal Prices and Payment,” (accessed March 2024), <https://dcps.dc.gov/page/meal-prices-and-payment>; The 2018-2019 contract between the School District of Escambia County, FL and Heartland Payment Systems, LLC provides two “fee model” options in the contract: “District Absorbed” or “Parent Paid.” This contract uses “Parent Paid.” See The School District of Escambia County Purchasing Department, *Online Payment Processing for Hosted School Nutrition and Point of Sale Software*, (accessed Apr. 2024). [https://www.escambia.k12.fl.us/board/PDF%2018/June/06\\_19\\_18\\_regmtg/V\\_b\\_2\\_E\\_13.pdf](https://www.escambia.k12.fl.us/board/PDF%2018/June/06_19_18_regmtg/V_b_2_E_13.pdf).

<sup>31</sup> USDA policy memoranda *SP 02-1015: Online Fees in School Meals Programs*, and *SP 23-2017: Unpaid Meal Charges: Guidance and Q&A*, allow school food authorities to pay fees associated with using an online system on behalf of families as an alternative to charging parents fees for such services. See U.S. Department of Agriculture, Food and Nutrition Service, *Memo SP02-2015: Online Fees in the School Meal Programs*, (Oct. 8, 2014), <https://www.fns.usda.gov/cn/online-fees-school-meal-programs>; U.S. Department of Agriculture, Food and Nutrition Service, *Memo SP23-2017: Unpaid Meal Charges: Guidance and Q&A*, (March 23, 2017), <https://www.fns.usda.gov/cn/unpaid-meal-charges-guidance-qas>.

<sup>32</sup> The Minneapolis Public Schools website describes how the district uses funds to subsidize part of the transaction fee for online lunch payments: “LINQ Connect charges a processing fee of \$2.60 for each online payment transaction, no matter the amount. MPS pays \$1.60 of this fee and the family pays \$1.” See Minneapolis Public Schools, *Eating at School*, (accessed Feb. 2024), <https://www.mpschools.org/departments/cws/menus/eating>;

districts paying for payment processing services, except through these transaction fees, nor any examples of school districts receiving revenue from the fees that payment processors charge.<sup>33</sup>

For many districts, the back-end software may be the main consideration when choosing a company to contract with. When this happens, a user-facing payment platform comes as part-and-parcel of a larger school nutrition program management system, insulating payment processors from competition based on transaction fees and negotiation that could lower fees assessed on end-users. Since payment platforms are typically provided without any up-front costs for school districts when included as part of a larger contract, school districts are not incentivized to prioritize low rates on fees that they will typically, in part or whole, pass on to end users. Families are only able to use the payment platform that their district has chosen, making it impossible to shop around for lower fees.

School districts that try to minimize fees charged to families may also run into challenges. Many districts may be limited in which payment options they can provide, due to cost or resource constraints that incentivize choosing providers who ultimately charge fees to families. Negotiating with payment companies may also be difficult for school districts. Although two school districts published information online about successfully negotiating with a payment company to offer a lower fee rate,<sup>34</sup> in interviews school officials at several districts across the country expressed that they were unaware that they could negotiate fee rates or otherwise felt that fee rates were non-negotiable.<sup>35</sup> Negotiating power may also vary by school district, as large districts may have additional leverage with payment processing companies or may benefit from fee discounts based on higher overall transaction volume. Smaller districts may not have the same advantages.

---

<sup>33</sup> The 2015 contract between Stamford, CT Public Schools and Heartland School Solutions notes that the line-item cost of “MySchoolBucks Payment Services” is \$0.00 for the school district, see Stamford Public Schools Purchasing Department, *BID/RFP/Contract Award – Recommendation*, (accessed May 2024), <https://stamfordapps.org/boecontracts/Docs/Contracts/VENDOR%20CONTRACTS/FY20-21/181105%20Heartland%20School%20Solutions%20TIPS%20contract.pdf>; The 2022 contract between Chapel Hill-Carrboro, NC Public Schools and EMS LINQ also shows a line item charge of \$0.00 for “K12 Payment Center Meals & Fees,” see Chapel Hill-Carrboro City Schools Board of Education, *Agenda Abstract*, (accessed May 2024), [https://chccs.granicus.com/MetaViewer.php?view\\_id=2&clip\\_id=550&meta\\_id=36302](https://chccs.granicus.com/MetaViewer.php?view_id=2&clip_id=550&meta_id=36302).

<sup>34</sup> In 2018, Hawaii Public Schools stated that they “negotiated a \$0.13 convenience fee with the new vendor, saving parents \$0.67. With the new meal payment system, the transaction fee is also lower at 1.99 percent. The previous transaction fee was 5 percent.” According to reporting, the Hawaii State Department of Education switched from SchoolCafé to EZSchoolPay in 2018, when their contract with the former payment company lapsed. See Hawaii State Department of Education, *Hawaii public schools to launch new online lunch payment system*, (May 2, 2018), <https://www.hawaiipublicschools.org/ConnectWithUs/MediaRoom/PressReleases/Pages/2018-eTritition-online-payments.aspx>; In 2017, Charles County Public Schools stated that they “recently negotiated an agreement with My Payments Plus to eliminate fees for system users” after charging a 3.75% service fee per transaction with the same platform. See Charles County Public Schools, *CCPS Eliminates Service Fees for My Payments Plus*, (December 22, 2017), <https://www.cchoe.com/about/public-info-media/details/-board/press-releases/post/ccps-eliminates-service-fees-for-my-payments-plus>.

<sup>35</sup> The CFPB conducted a series of unstructured interviews with school district officials from around the country from February through March 2024.

## 3.2 Payment Platform Features and Fees

### 3.2.1 Product Features

Most companies that enable electronic school lunch payments advertise additional features for users, including scheduling automatic payments, sending low balance alerts, sharing account balance and meal purchase information, and processing payments. Some payment processors also provide a space in their user portals for schools to upload monthly lunch menus or post other announcements for caregivers to review. For many districts, families also use these online portals to submit applications for the free and reduced price lunch programs. Apart from making electronic payments, companies promote many of these features as free with the creation of an account.<sup>36</sup>

### 3.2.2 Product Fees

Payment processors typically charge transaction fees each time an electronic payment is made. Companies that process school lunch payments may also charge other fees like convenience fees, which may include a fee for transferring funds between student accounts, or annual program fees that increase the cost of making online payments.<sup>37</sup>

As previously discussed, fee rates are determined by each school district's contract with the payment processor. Interviews with school district officials and information published on school district websites suggest that companies have broad control over fee rates.<sup>38</sup> Payment processors' terms of service also establish the company's unilateral control over fee levels and its ability to change them at any time.<sup>39</sup> School districts that cover all transaction fees on behalf of

---

<sup>36</sup> For example, "Registering online with MyPaymentsPlus allows you to view your student's account balances, purchase history, and payment history online, and even be notified by email when account balances fall below a designated amount. You do not have to make prepayments to use these features." See Cobb County School District, "Food and Nutrition Services," (accessed Mar. 2024), <https://www.cobbk12.org/foodservices/page/45098/paying-for-meals>; "Myschoolbucks.com is an online payment portal specially designed to allow parents to make quick and easy online payments to their children's school accounts. The system allows parents to manage their children's lunch accounts, including viewing food selection." See Coconut Creek Elementary (Broward County Public Schools), "Set Up Your Child's Online Meal Payment Account via MySchoolBucks," (accessed Mar. 2024), <https://www.browardschools.com/site/default.aspx?PageType=3&DomainID=27&ModuleInstanceID=3466&ViewID=6446EE88-D30C-497E-9316-3F8874B3E108&RenderLoc=0&FlexDataID=235479&PageID=47>.

<sup>37</sup> Some payment processors use different names to distinguish fee types. This report refers to any fees that are processed on a per-transaction basis as "transaction fees." Other fee types are explained in Section 4.2.2.

<sup>38</sup> The CFPB conducted a series of unstructured interviews with school district officials from around the country from February through March 2024.

<sup>39</sup> "LINQ may charge a fee in connection with the Services and/or transactions processed through the Services. The Fee will apply to each one-time, automated, and scheduled payment." See EMS LINQ Inc., *LINQ Connect Terms of Service*, (accessed Feb. 2024), <https://linqconnect.com/main/terms>; "If you use MySchoolBucks to add funds to your

their users may pay more favorable fee rates compared to individuals. At least one school district entering into a contract with MySchoolBucks received certain fee discounts after indicating that the district planned to cover all transaction fees.<sup>40</sup>

### 3.2.3 Costs of Electronic Transactions

Electronic transactions incur costs for payment processors. These costs differ depending on which payment mechanism is used. On their online portals, payment processors typically offer credit, debit, and prepaid cards, and, in fewer cases, Automated Clearing House (ACH) transactions.<sup>41</sup> Typically, processor's payment processing costs fall around 1.53 percent of a total transaction for credit, debit, or prepaid cards,<sup>42</sup> and between \$0.26 and \$0.50 per transaction for ACH transfers.<sup>43</sup> Nonetheless, even the lowest transaction fees assessed by payment processors in school districts observed in the CFPB sample (\$1.00 or 3.25%)<sup>44</sup> are significantly higher than the payment processors' costs of processing electronic transactions.

---

child's account, you may pay a program fee for the convenience of using our online service." See MySchoolBucks, *Terms of Service*, (accessed Feb. 2024), <https://login.myschoolbucks.com/users/etc/getterms.action?clientID=schoolbucks>; "SchoolCafé imposes a convenience fee on every payment made using the Service. The convenience fee, an amount or a percentage of the payment, is set solely at the discretion of SchoolCafé and can be changed at any time without notice." See SchoolCafé, *Terms of Service*, (accessed Feb. 2024), <https://www.schoolcafe.com/>.

<sup>40</sup> "We [Heartland Payment Systems, Inc.] understand that instead of passing the convenience fees along to the parents, FCPS plans to absorb those fees directly. In light of that, we are able to offer more favorable pricing than what was contained in our original proposal...When compared to our original pricing, we reduced the number of volume-based tiers and lowered the fee for each tier." See Fairfax County Public Schools, *Acceptance Agreement Attachment D*, (Aug. 12, 2014), <https://www.fairfaxcounty.gov/cregister/DownloadPDF.aspx?AttachmentID=926546c7-25aa-4447-a696-885977c7f569>.

<sup>41</sup> Information on payment processing websites suggests that available payment methods ultimately depend on the contract between the payment processor and school district.

<sup>42</sup> A recent *The Nilson Report* notes that the weighted average of processing fees that merchants paid in 2023 was 1.53 percent of purchase volume on all credit, debit, and prepaid general purpose and private label cards. Fees related to debit card transactions are typically lower. Since 2011, debit card fees are capped by the Federal Reserve at \$0.21 plus 0.05% of the transaction value for covered issuers. According to data from 2022, average interchange fees for all debit transactions (both exempt and covered) were \$0.34 or 0.73% of the average transaction value. See *The Nilson Report, Issue 1259* (Mar 2024); The Federal Reserve, *Regulation II (Debit Card Interchange Fees and Routing)*, (accessed April 2024), <https://www.federalreserve.gov/paymentsystems/regii-average-interchange-fee.htm>.

<sup>43</sup> The 2022 Payments Cost Benchmarking Survey found the median cost of initiating and receiving an ACH payment for all businesses to be between 26 cents and 50 cents. See Nacha, *ACH Costs are a Fraction of Check Costs for Businesses, AFP Survey Shows*, (accessed April 2024), <https://www.nacha.org/news/ach-costs-are-fraction-check-costs-businesses-afp-survey-shows>.

<sup>44</sup> For example, Poudre School District, (accessed May 2024), <https://www.psdschools.org/schools/student-fees-charges/pay-feescharges-online>; For example, Plano School District, (accessed May 2024), <https://www.pisd.edu/Page/3841>.



# 4. Sample Findings

In a sample consisting of the 300 largest public school districts in the United States,<sup>45</sup> 261 school district websites disclosed a partnership with a payment processor for school lunch payments. Once a partnership was identified, the CFPB recorded a number of variables including information about associated fees, fee types, and amounts (see Appendix A).

## 4.1 Sample Market Composition

Three providers, MySchoolBucks, SchoolCafé, and LINQ Connect, are the largest school payment processors in the sample according to the number of school district partnerships, school partners, and related total enrollment (see Table 1). In the sample, these three providers served more than 9.2 million students across more than 13,500 schools and 181 public school districts. MySchoolBucks is the largest across all three metrics, with almost 100 school district partnerships and more than 5 million enrolled students within the sample.

**TABLE 1:** TOP 5 PAYMENT PROCESSORS IN CFPB SAMPLE

Payment Processor	Number of School Districts in Sample	Number of Schools in Sample	Enrollment (Fall 2021)	Sample Market Share by Enrollment
MySchoolBucks	95	7,675	5,246,339	38.1%
SchoolCafé	47	3,315	2,335,896	17.0%
LINQ Connect	39	2,514	1,652,533	12.0%
MyPaymentsPlus	20	1,661	1,272,791	9.3%
PayPams	14	1,573	1,043,069	7.6%
<b>Sample Total</b>	<b>261</b>	<b>19,996</b>	<b>13,756,050</b>	<b>100%</b>

---

<sup>45</sup> The sample constructed by the CFPB is based on the 300 largest school districts in the United States by enrollment during the 2021-2022 school year. Enrollment data is from the National Center for Education Statistics. See Appendix A: Methodology for more information.

## 4.2 Fee Rates

### 4.2.1 Transaction Fees

While USDA guidance requires that families are notified about available payment methods and associated fees, many school districts do not publish information related to fees on their websites.<sup>46</sup> Across the 63 school districts in the CFPB sample that do publish fee specifics, average transaction fees were \$2.37 for flat fees, and 4.4 percent for percentage fees. Median fees were \$2.49 and 4.5 percent. Since these figures are from only the 21 percent of school districts in the CFPB sample that publicly report fee amounts, they may misestimate the true market average.

In the CFPB sample, payment processors at more than 70 percent of the districts that publish fee information charge flat transaction fees. At around 25 percent of these school districts, payment processors charge percentage fees, and a much smaller portion have a transaction fee model that incorporates both a flat per transaction fee and a percentage fee that varies based on deposit size.<sup>47</sup> Overall, fee levels vary widely between providers, and for the same provider across different school districts (see Table 2).

**TABLE 2:** FEE RANGE AND AVERAGE FEES FOR TOP 5 PAYMENT PROCESSORS IN CFPB SAMPLE

Payment Processor	Flat Fee		Percentage Fee	
	Fee Range	Average Fee	Fee Range	Average Fee
MySchoolBucks	\$1.00 - \$3.25	\$2.55	4.50%	4.50%
SchoolCafé	\$1.95 - \$2.95	\$2.38	3.25% - 5.00%	4.58%
LINQ Connect	\$1.00 - \$2.60	\$2.13	3.50%	3.50%
MyPaymentsPlus	NA	NA	3.99% - 4.75%	4.33%
PayPams	\$1.95 - \$2.40	\$2.31	NA	NA

NA appears where fee data was not observed.

<sup>46</sup> U.S. Department of Agriculture, Food and Nutrition Service, *Memo SP23-2017: Unpaid Meal Charges: Guidance and Q&A*, (March 23, 2017), <https://www.fns.usda.gov/cn/unpaid-meal-charges-guidance-qas>.

<sup>47</sup> For example, “There is an additional fee of 2.9% + \$0.25 per transaction (for debit or credit card).” See Indian Prairie School District #204, *PushCoin*, (accessed March 2024), <https://www.ipisd.org/Page/2623>.

Flat fees observed in the CFPB sample ranged from \$1.00 to \$3.25 per transaction.<sup>48</sup> The highest flat fees observed were from school districts partnering with MySchoolBucks (\$3.25)<sup>49</sup> and EZSchoolPay (\$3.00).<sup>50</sup> Percentage fees ranged from 3.25 percent to 5 percent of the total deposit. The highest percentage-based transaction fees were observed at school districts partnering with SchoolCafé (5 percent).<sup>51</sup>

## 4.2.2 Other Fees

In addition to transaction fees, some school district websites also mention other fees that may increase the total cost for families using these services. It is unclear whether school districts are able to negotiate these fees in their contracts.

- Though many payment processors advertise free account membership, one leading payment processor is also starting to roll out a **one-time program fee** to be paid when a new account is opened. The CFPB has observed this fee type costing \$2.50 per account.<sup>52</sup>
- Instead of paying a fee for each transaction, some payment processors offer **annual fees** that cover certain electronic transactions for a full year. The CFPB has observed this fee type costing \$12.95 per year for a single student or \$26.95 per year for a family.<sup>53</sup>

---

<sup>48</sup> Most payment processors charge one fee regardless of payment method, others have fees that vary. For example, Chandler Unified School District has information on their website that specifies, “When using MySchoolBucks.com platform to fund student accounts, the following fees will be charged to the user: Funded by credit card/debit card: \$3.25 per transaction; Funded by e-check/bank account transaction: \$2.75.” See Chandler Unified School District, “Online Student Meal Payment Account,” (accessed April 2024), <https://www.cusd80.com/Page/118077>.

<sup>49</sup> For example, Pinellas County Schools, (accessed Mar. 2024), <https://www.pcsb.org/Page/40505>.

<sup>50</sup> For example, Deer Valley Unified School District, (accessed Mar. 2024), <https://www.dvUSD.org/studentaccounts>.

<sup>51</sup> For example, Virginia Beach City School District, (accessed Mar. 2024), <https://www.vbschools.com/families/food-and-nutrition-services>; Omaha School District, (accessed March 2024), <https://www.ops.org/Page/319>; Beaverton 48J School District, <https://www.beaverton.k12.or.us/departments/nutrition-services/student-account>; Douglas County School District, (accessed Mar. 2024), <https://www.dcsd.net/departments/nutrition-services>.

<sup>52</sup> “Beginning next week, some parents in your district will see a Fall 2023 Program Fee of \$2.50 at their next transaction on MySchoolBucks.” See Escambia County Public Schools, *Food Services*, (accessed Mar. 2024), <https://www.escambiaschools.org/Page/802>.

<sup>53</sup> “My School Bucks now has an option available to pay an annual, one-time flat fee of \$12.95 for a single student or \$26.95 for a family. The “OnePay” option gives you unlimited transactions for 12 months, instead of the per-transaction fee of \$2.75 for individual transactions.” See McKinney ISD, *Meal Prices & Payments*, (accessed March 2024), <https://www.mckinnevisd.net/school-nutrition/meal-prices-payments/>; Chandler Unified School District, *Online Student Meal Payment Account*, (accessed March 2024), <https://www.cusd80.com/Page/118077>.

- Another payment processor charges a **convenience fee** for users to transfer funds between student accounts within the same family. The CFPB has observed this fee type costing \$2.99 for a full year of transfer capabilities.<sup>54</sup>
- Some payment processors also set a **maximum deposit amount** limiting how much a user can upload to their student’s lunch account in one transaction. For example, with a cap of \$200 per transaction, a family would have to make at least three deposits a year per student to cover the average cost of school lunches, with each transaction incurring its own fee.<sup>55</sup>

---

<sup>54</sup> “If you are only transferring funds between siblings enrolled in CCSD, you have the option of doing so online via MyPaymentsPlus.com for any registered students on your account. There is a \$2.99 convenience fee for this service for a full year of access to transfers.” See Cobb County School District, *Food and Nutrition Services*, (accessed March 2024), <https://www.cobbk12.org/foodservices/page/45098/paying-for-meals>.

<sup>55</sup> The average cost of a middle school lunch nationwide is \$3.00. Over the course of 180-day school year, this would amount to \$540 per year. Adding \$540 to an account with a per-transaction cap of \$200 would take three separate transactions, each incurring its own transaction fee.

# 5. Costs and Difficulties for Consumers

Online payment platforms offer convenient solutions for school districts and families, but they also present potential negative implications for consumers. School lunch costs can be a challenge to families across the country, in part illustrated by the national average meal debt of \$180.60 per child, per year.<sup>56</sup> Families, particularly those that are struggling to cover the cost of lunch itself, may find it difficult to avoid fees and may face other difficulties exacerbated by the use of payment platforms.

## 5.1 Inaccessible Fee-Free Options

Although payment platforms often perform a variety of services for school districts, including certain functions that help enable compliance, companies leave it to school districts alone to create and, in many cases advertise or disclose, any fee-free payment methods. Some school district websites note that families can add funds in person or by sending cash or check with a student.<sup>57</sup> Other school districts have policies that limit the use of cash, personal checks, or both,<sup>58</sup> which may raise questions regarding the districts' conformity with USDA policy.<sup>59</sup> Even if families are aware of alternative options for paying school-related expenses, they may also

---

<sup>56</sup> Education Data Initiative, "School Lunch Debt Statistics," Hanson, Melanie, (accessed June 2024), <https://educationdata.org/school-lunch-debt>; U.S. Department of Agriculture Economic Research Service, *Cost of school meals and households' difficulty paying for expenses: Evidence from the Household Pulse Survey*, Toossi, S., (accessed June 2024), <https://www.ers.usda.gov/webdocs/publications/106915/eh-37.pdf?v=64311>.

<sup>57</sup> "Of course, meal payments can also be made by sending cash or checks (payable to the school cafeteria) to school with your child." See Forsyth School District, *Food & Nutrition Services*, (accessible Mar. 2024), <https://www.forsyth.k12.ga.us/page/401>; "Meals may still be prepaid by depositing cash into student accounts." See Spring ISD, *Online Payment Option Available for Meals*, (accessed Mar. 2024), <https://www.springisd.org/page/online-payments>; "Families without credit/debit cards can add money to their students' account by bringing a check to the cafeteria staff at the school. There is no processing fee charged for these transactions." See Minneapolis Public Schools, *Eating at School*, (accessed Mar. 2024), <https://www.mpschools.org/departments/cws/menus/eating>.

<sup>58</sup> "This school year (SY2023-24) students will be able to purchase items a la carte, such as milk. To do so, they need to have money loaded onto their MySchoolBucks account. No cash will be accepted." See SDU46, *School Breakfast & Lunch Menus*, (accessed Mar. 2024), <https://www.u-46.org/Page/9190>; "Meals may be purchased with cash or by using the online payment system, [SchoolCafe]...The Pasadena Independent School District Nutrition Services will not accept personal checks." See Pasadena Independent School District, *Meal Price & Online Payments*, (accessed Mar. 2024), [https://www.pasadenaisd.org/13013\\_4](https://www.pasadenaisd.org/13013_4).

<sup>59</sup> According to USDA guidance, SFAs cannot exclusively use an online system for payment. Those that do use an online system must provide an alternative option to meet the needs of families who do not have access to a computer or who prefer to make their payment in person. See U.S. Department of Agriculture, Food and Nutrition Service, *Memo SP 23-2017: Unpaid Meal Charges: Guidance and Q&A*, (March 23, 2017), <https://www.fns.usda.gov/cn/unpaid-meal-charges-guidance-qas>.

potentially come with their own costs and limitations, in the form of transportation costs or difficulty accessing financial services.<sup>60</sup>

Even where school districts allow fee-free payment options, free methods may not be meaningfully available to all families. Although school districts are required by USDA to provide fee-free methods and to inform families of their options to pay for school lunch,<sup>61</sup> not all school districts make the information readily available to families on their website. School districts are also not required to provide comparable online payment options that do not incur fees. As a result, other payment methods may be less well-known and less accessible than online payments. For non-meal-related expenses, the CFPB did not encounter any examples of similar requirements, so families may not have any fee-free options for paying these other expenses.

It may also be difficult for families to predict the total cost of using an electronic payment option. In many cases, the first time a caretaker will see how much they must pay to use an online payment platform is at the point of sale, which obscures the total cost until near the end of the transaction. Only 21 percent of sampled school districts explicitly disclose the fees associated with online transactions and no payment processors in the sample include specific information about potential fees on their website.

In some cases, families may be paying fees for electronic payments without knowing that they are entitled to fee-free options. The CFPB's Fall 2023 edition of Supervisory Highlights noted that payment processors have maintained payment platforms on which consumers may have paid fees that they would not have paid had the consumers understood that they were entitled to free options. As a result, the CFPB observed that the payment processors' practices may not have complied with consumer financial protection laws.<sup>62</sup>

---

<sup>60</sup> For example, one school district specifies that they do not accept cash but will accept cashier's checks or money orders to pay for school lunch. These banking services may be difficult to access for some families, making it more expensive to avoid fees. See Atlanta Public Schools, *Nutrition Pre-Payment Options*, (accessed Mar. 2024), <https://www.atlantapublicschools.us/domain/14255>; "Many types of bill payments incur costs for consumers... Some payment instruments can be costly to obtain, such as money orders and checks, while others can be costly to use, such as some credit cards. Consumers usually incur the highest costs when paying a bill in person (regardless of payment instrument) due to transportation costs and the lowest costs when paying over the phone or online; paying through the mail, which incurs postage costs, is somewhere in between." See also Federal Reserve Bank of Kansas City, *When Paying Bills, Low-Income Consumers Incur Higher Costs*, (accessed Mar. 2024), <https://www.kansascityfed.org/research/payments-system-research-briefings/when-paying-bills-low-income-consumers-incur-higher-costs/>.

<sup>61</sup> U.S. Department of Agriculture, Food and Nutrition Service, *Memo SPO2-2015: Online Fees in the School Meal Programs*, (Oct. 8, 2014), <https://www.fns.usda.gov/cn/online-fees-school-meal-programs>.

<sup>62</sup> Consumer Financial Protection Bureau, *Supervisory Highlights: Junk Fees Update Special Edition, Issue 31, Fall 2023* (Oct. 2023), <https://www.consumerfinance.gov/data-research/research-reports/supervisory-highlights-junk-fees-update-special-edition-issue-31-fall-2023/>, at 15.

## 5.2 Difficulty Canceling Automatic Payments

Many payment processors allow users to turn on automatic payments at scheduled intervals or when school lunch account balances fall below a certain threshold. Conversations with school district officials described certain issues faced by families who set up autopay and then had difficulties canceling or otherwise forgot to cancel it when no longer needed.<sup>63</sup> Excess funds can quickly accrue in a student’s school lunch account if automatic payments are accidentally left on.<sup>64</sup> Each automatic transaction still incurs a per-transaction fee assessed by the payment processor, so families using automatic payments may be paying additional per-transaction fees to add unnecessary funds. Families are instructed to go directly to their child’s school for refunds, so any extra funds paid into a student’s school lunch account create additional administrative tasks for school district staff and may further delay when a refund is ultimately received.

## 5.3 Difficulty Accessing Timely Refunds

At the end of an academic year, funds in a student’s lunch account generally roll over for use when the school year resumes in the fall. There may be times, however, when families need to request a refund of the funds paid into their student’s lunch account. Terms and conditions of payment platforms generally note that if a caregiver is seeking a refund from a student’s account, they must contact their child’s school directly.<sup>65</sup> Payment processors do not hold on to

---

<sup>63</sup> The CFPB conducted a series of unstructured interviews with school district officials around the country from February through March 2024.

<sup>64</sup> For example, The Lewisville ISD website includes information warning caregivers that they must turn off auto-replenish and low balance alerts on their RevTrak payment platform before requesting a refund from the school district. See Lewisville ISD, *Refunds, A la Carte Policy, and LISD Employee Accounts*, (accessed April 2024), <https://www.lisd.net/Page/22806>.

<sup>65</sup> “If you are not satisfied with any good or service purchased using the Services, you agree to resolve the issue exclusively with the Student’s School... You agree that you will not seek and are not entitled to a refund from LINQ.” See EMS LINQ Inc., *LINQ Connect Terms of Service*, (accessed Feb. 2024), <https://lingconnect.com/main/terms>; “You agree that you will not seek and are not entitled to a refund from HPS. If you would like a refund of any kind from you Student’s school or school district, you must contact your student’s school or school district.” See MySchoolBucks, *Terms of Service*, (accessed Feb. 2024), <https://login.myschoolbucks.com/users/etc/getterms.action?clientID=schoolbucks>; “All issues relating to unused funds on a student account should be addressed directly with the students’ school districts SchoolCafé cannot be held liable to the Users for any unused funds.” See SchoolCafé, *Terms of Service*, (accessed Feb. 2024), <https://www.schoolcafe.com>.

student lunch account funds, as funds are directly transferred to school district bank accounts once a payment is made. Each school has its own process for distributing refunds.<sup>66</sup>

At some school districts, the refund process can be complicated, requiring additional paperwork for families,<sup>67</sup> and may take weeks for the money to be returned.<sup>68</sup> Families using these payment platforms may be less willing to add a substantial amount to their accounts, due to the difficulty of accessing refunds, which may result in incurring additional per-transaction fees.

## 5.4 Fee Burden

Fees charged by payment platforms affect all families, though low-income families may be disproportionately impacted depending on the fee type and how often they make deposits over the course of a school year. Based on sample averages, school lunch payment processors nationwide may be collecting more than \$100 million each year in transaction fees alone.<sup>69</sup> The total fee revenue collected by payment processors could be higher, after including revenue from other fees or additional lunchtime expenses. For families paying for their child's lunch, these fees may pose a significant additional expense.

---

<sup>66</sup> On their website, MySchoolBucks specifies that “Payments placed through MySchoolBucks are quickly expedited to your school’s bank for deposit. All funds are housed by your district office.” See MySchoolBucks, *Top Support Questions*, (accessed March 2024),

<https://www.myschoolbucks.com/ver2/etc/getcontacts.action?clientKey=ZZHKFGWNS605S8L#:~:text=All%20funds%20are%20housed%20by,department%20to%20obtain%20a%20refund>.

<sup>67</sup> For example, caregivers seeking a refund for school lunch account balances are required to submit a W-9 form to the Albuquerque Public Schools. See Albuquerque Public Schools, Food and Nutrition Services, (accessed April 2024), <https://www.aps.edu/food-and-nutrition-services/school-menus-and-prices>.

<sup>68</sup> For example, information on the Spring Branch Independent School District website says that refunds can take 2-3 weeks to process. See Spring Branch ISD, *Payments and Refunds*, (accessed April 2024),

<https://www.springbranchisd.com/about/departments/finance/school-nutrition-services/payments-and-refunds>;

Since refunds at Prince William County schools are sent in the form of checks via mail, they take between 4 and 6 weeks to process. See PWCS Nutrition, (accessed April 2024),

<https://www.pwcsnutrition.com/index.php?sid=0408101731444083&page=prepaidacct>.

<sup>69</sup> Estimates are made based on national averages, including average cost of school lunch (\$3.00 or \$0.40), length of a school year (180 days), and sample averages of flat fee prevalence compared to percentage fee prevalence (74 percent and 26 percent, respectively), average fee rates (\$2.37 or 4.4 percent), and the proportion of schools in the sample that enable electronic payments through a payment platform (87 percent). Using USDA data describing daily participation in the National School Lunch program (8.5 million for full-priced lunch and 1.1 million for reduced price lunch) and insight from a payment processing company estimating that as many as a third of students paying for lunch do so using funds added to their account electronically, the CFPB estimated that 315,810 students pay for reduced price lunch and 2.4 million students pay for full price lunch using online payment methods. Using these estimates, as well as the annual fee costs for a student paying for full or reduced price lunch every school day, and the relative prevalence of flat and percentage fees in the CFPB sample, the CFPB estimates that companies collect between \$28 million and \$92 million in fees from students paying for full-priced lunch and between \$1.9 million and \$10.2 million from students paying for reduced price lunch in transaction fees each year. The lower end of the estimated fee range is based on families making just 3 payments per year. The higher end of the range is based on families making payments every other week, or 18 deposits a year. This estimated range in transaction fee revenue is just for transaction fees incurred while paying for a student’s first lunch, without including any transaction fees for additional meals or a la carte purchases.



Flat transaction fees, as opposed to percentage fees, are much more prevalent among sampled school districts. By nature, flat fees have a regressive impact on lower-income users. Payment platforms appear to charge the same transaction fee for all users, regardless of whether a student receives free or reduced price lunch. Flat transaction fees are also much more expensive for users who make deposits more frequently, compared to those who can afford to deposit more money less frequently.<sup>70</sup> An industry-sponsored survey found that 60 percent of users on online school payment portals make two or more deposits per month, amounting to approximately 18 deposits per year.<sup>71</sup> Conversations with school district administrators suggested that some families may be using these online services much more often, up to once a week.<sup>72</sup> Although some families are able to deposit significant amounts into their child's account at the beginning of a school year, that option might not be available for families living paycheck to paycheck. Frequent deposits can exacerbate the regressive effect of flat fees for families who do not have the financial flexibility to pre-load hundreds of dollars into their child's lunch account at one time.

Table 3 shows three scenarios of potential fee burdens associated with full-priced school lunch costs. The below scenarios are based on two different levels of deposit frequency (twice per month, or biweekly, and three times a year), the average flat and percentage fee rates from the CFPB sample (\$2.37 and 4.4 percent), the average full-price cost of a middle school lunch (\$3.00),<sup>73</sup> and the average length of a school year (180 school days).<sup>74</sup>

---

<sup>70</sup> Consumer Financial Protection Bureau, *Supervisory Highlights: Junk Fees Update Special Edition, Issue 31, Fall 2023* (Oct. 2023), <https://www.consumerfinance.gov/data-research/research-reports/supervisory-highlights-junk-fees-update-special-edition-issue-31-fall-2023/>, at 15.

<sup>71</sup> EMS LINQ, Inc., *2023 K-12 Payments Survey Report* at 9, (accessed Feb. 2024), <https://www.linq.com/report/2024-k12-payments-survey-report/>.

<sup>72</sup> The CFPB conducted a series of unstructured interviews with school district officials around the country from February through March 2024.

<sup>73</sup> School Nutrition Association, *School Meal Statistics: School Meal Prices and Unpaid Meals*, (accessed Mar. 4, 2024), <https://schoolnutrition.org/about-school-meals/school-meal-statistics/>.

<sup>74</sup> U.S. Department of Education, Institute of Education Sciences, National Center for Education Statistics, *Average number of hours in the school day and average number of days in the school year for public schools*, (last updated 2007-08, retrieved May 2024), [https://nces.ed.gov/surveys/sass/tables/sass0708\\_035\\_sis.asp](https://nces.ed.gov/surveys/sass/tables/sass0708_035_sis.asp).

**TABLE 3:** SAMPLE COSTS FOR FAMILIES PAYING FULL PRICE FOR SCHOOL LUNCH WITH ONLINE PAYMENTS

Scenario	Annual Lunch Cost Paid to School	Annual Fees Paid to Company	Ratio of Fees to Annual Lunch Cost Paid to School	Total Amount Paid (including fees)
\$2.37 fee, paid <i>biweekly</i> for a school year	\$540	\$42.66	7.9%	\$582.66
\$2.37 fee, paid <i>three times</i> a school year	\$540	\$7.11	1.3%	\$547.11
4.4% fee, paid over the course of a school year	\$540	\$23.82	4.4%	\$563.82

Families who pay full price for school meals and make two deposits a month into their child’s lunch account would incur over \$42 in fees over the course of a school year. For these families, for every \$1 they spent on school lunch, they paid \$0.08 to the company processing their payments. Families who instead make just three payments a year end up paying much less in fees, around \$7. In this case, for every \$1 spent on school lunch, they paid just over \$0.01 to a payment processor.

Table 4 shows three scenarios of potential fee burdens associated with reduced priced lunches, which cost \$0.40 per lunch on average.<sup>75</sup> Since transaction fees appear to be the same across the board regardless of whether a student is eligible for free or reduced price lunch, families who pay for reduced price lunch pay more in fees relative to their school lunch costs during a school year.

---

<sup>75</sup> School Nutrition Association, *School Meal Statistics: School Meal Prices and Unpaid Meals*, (accessed Mar. 4, 2024), <https://schoolnutrition.org/about-school-meals/school-meal-statistics/>.

**TABLE 4:** SAMPLE COSTS FOR FAMILIES PAYING REDUCED PRICE FOR SCHOOL LUNCH WITH ONLINE PAYMENTS

Scenario	Annual Lunch Cost Paid to School	Annual Fees Paid to Company	Ratio of Fees to Annual Lunch Cost Paid to School	Total Amount Paid (including fees)
\$2.37 fee, paid <i>biweekly</i> for a school year	\$72.00	\$42.66	59.3%	\$114.66
\$2.37 fee, paid <i>three times</i> a school year	\$72.00	\$7.11	9.9%	\$79.11
4.4% fee, paid over the course of a school year	\$72.00	\$3.18	4.4%	\$75.18

Families who pay for reduced price lunch and make two deposits a month into their child’s school lunch account would still incur over \$42 in fees over the course of a school year. For these families, every \$1 spent on school meals for their child corresponds to \$0.60 that was paid to a payment processor. Families who can afford to make just three payments a year still pay \$7 in fees, which amounts to about \$0.10 for every \$1 paid for school lunch.

## 6. Conclusion

Every day, families of school-aged children across the country spend millions of dollars on school lunch. Many caregivers opt to use online platforms to deposit money into their children's accounts, incurring average fees of \$2.37 or 4.4% of the total deposit per transaction. These fees are widespread, regressive, and may be burdensome for families and districts, who have little control over fee rates and few opportunities to shop around.

School food authorities participating in the USDA's National School Lunch Program are required to provide fee-free avenues to pay for school lunch and inform families about all available payment methods, including associated fees. However, these fee-free options are not always well advertised or accessible. Despite requirements from the USDA, families may be paying more in fees than they would choose to if they had access to comparably convenient payment options with lower or no fees. Although school districts are able to negotiate fees while contracting with payment platforms, payment processors appear to have broad control over the fees they charge. Few school districts have been successful in ultimately lowering fees for families.

School districts face limited options. The market for school-related payment processing is dominated by a few market leaders and school food authorities may be locked in to using a certain payment platform due to its connection to the back-end service managing their school nutrition program. In turn, families have little choice in the payment platform offered by their school district and may be particularly vulnerable to harmful practices, including those that may violate federal consumer protection law.

## APPENDIX A: METHODOLOGY

# Sample Construction

This report analyzed data from the 300 largest public school districts by enrollment according to Fall 2021 data from the National Center for Education Statistics (NCES).<sup>76</sup> The CFPB examined the website of each school district in the dataset to identify publicly available information on lunch payment processor partnerships and fees. The CFPB also searched the websites of associated payment processors. This research was conducted between December 2023 and April 2024.

## Variables

Once a school district was identified, the CFPB recorded the URL for the relevant district website, whether a payment processor is used for online school meal payments, whether the district offered free lunch for all students during the 2023-2024 school year, whether there is a fee associated with online payments, the fee category (e.g., flat fee or percentage), the fee amount, and relevant URLs. School districts within the sample that use only alternative channels to inform families of online lunch payment options, such as direct-to-family newsletters or printed resources distributed at the beginning of the school year, are not adequately captured in this dataset. Only cases where a payment processor for school lunch payments could definitively be identified are observed in the sample.

The CFPB also included descriptive statistics for each school district in the sample, including public high school graduation rates, total number of English language learners, the share of students eligible for free or reduced price lunches, the poverty rate of 5-to 17-year-olds within

---

<sup>76</sup> National Center for Education Statistics, *Digest of Education Statistics*, “Table 215.10 – Selected statistics on enrollment, staff, and graduates in public school districts enrolling more than 15,000 students in fall 2021 (1990 through 2021),” [https://nces.ed.gov/programs/digest/d22/tables/dt22\\_215.10.asp](https://nces.ed.gov/programs/digest/d22/tables/dt22_215.10.asp), “Table 215.20 – Revenues, expenditures, poverty rate, and Title I allocations of public school districts enrolling more than 15,000 students in fall 2021,” [https://nces.ed.gov/programs/digest/d22/tables/dt22\\_215.20.asp](https://nces.ed.gov/programs/digest/d22/tables/dt22_215.20.asp).

the district, and the number of schools for each district. For the sample of the 300 largest districts, this data comes from the National Center for Education Statistics.<sup>77</sup>

Table 5 contains a comparison between descriptive statistics of the CFPB sample and public school districts nationwide.

**TABLE 5: COMPARISON BETWEEN NATIONAL AND CFPB SAMPLE DESCRIPTIVE STATISTICS**

Metric	CFPB Sample	Nationwide <sup>78</sup>	Sample Percentage
Total enrollment	16,734,497	46,395,290	36%
Number of K-12 schools	25,345	99,239	26%
Number of school districts	300	13,318	2%
Average school district enrollment	55,782	3,484	NA
Average school size	660	512	NA
Average share of students eligible for free and reduced price lunch program	48.5%	48.6%	NA

NA appears where a calculation is not applicable.

The CFPB sample, which includes data from the 300 largest school districts by fall 2021 enrollment, is not representative of the full population of public schools across the country. The CFPB dataset overrepresents large school districts, with the sample average school district size (55,782) far exceeding the national average (3,484). According to data from the National Center for Education Statistics, 71 percent of school districts in the U.S. had fewer than 2,500 enrolled students in the fall of 2021. However, these schools serve just 16.7 percent of the total number of enrolled students nationwide. The CFPB sample captures 36.1 percent of total student enrollment, while featuring only 2.25 percent of school districts. The CFPB dataset reflects nationwide trends for the percent of students eligible for free and reduced price lunch at about 48.5 percent.

<sup>77</sup> National Center for Education Statistics, *Digest of Education Statistics*, “Table 215.10 – Selected statistics on enrollment, staff, and graduates in public school districts enrolling more than 15,000 students in fall 2021 (1990 through 2021),” [https://nces.ed.gov/programs/digest/d22/tables/dt22\\_215.10.asp](https://nces.ed.gov/programs/digest/d22/tables/dt22_215.10.asp), “Table 215.20 – Revenues, expenditures, poverty rate, and Title I allocations of public school districts enrolling more than 15,000 students in fall 2021,” [https://nces.ed.gov/programs/digest/d22/tables/dt22\\_215.20.asp](https://nces.ed.gov/programs/digest/d22/tables/dt22_215.20.asp).

<sup>78</sup> Nationwide statistics are from Tables 204.10, 214.20, and 214.40 of the most recent edition of the *Digest of Education Statistics* from the National Center for Education Statistics. All statistics are from the 2021-2022 academic year. See National Center for Education Statistics, *Digest of Education Statistics*, (accessed February 2024), [https://nces.ed.gov/programs/digest/current\\_tables.asp](https://nces.ed.gov/programs/digest/current_tables.asp).

In addition to the sample of the 300 largest school districts, the CFPB also analyzed data from a sample of 50 rural<sup>79</sup> public school districts, selected randomly from all U.S. counties with a nonmetro 2023 Rural-Urban Continuum Code (RUCC),<sup>80</sup> then subsequently matched with a corresponding district.<sup>81</sup> This rural sample was used to verify that smaller school districts, serving fewer students, also use these payment products for school lunch costs. Figures from the rural sample were not used to generate fee ranges or averages reported in the body of this issue spotlight. Among 50 rural school districts, 29 disclose a partnership with a third-party payment processor. MySchoolBucks is also the largest provider in the rural sample with 8 district partnerships. The rural sample is not large enough to analyze other information, such as fee averages.

---

<sup>79</sup> In this report, “rural” is used interchangeably with “nonmetro” as classified in the Rural-Urban Continuum Codes documented by the USDA.

<sup>80</sup> The 2023 Rural-Urban Continuum Codes distinguish U.S. metropolitan counties by the population size of their metro area, and nonmetropolitan counties by their degree of urbanization and adjacency to a metro area. The division of counties as either metro or nonmetro, based on the 2023 Office of Management and Budget (OMB) delineation of metro areas, is further subdivided into three metro and six nonmetro categories. Counties with an RUCC of greater than or equal to 4 are considered nonmetro, with counties classified as a 9 exhibiting the least urbanization. All told, the 2023 Rural-Urban Continuum Codes include 1,186 metro counties and 1,958 nonmetro counties in U.S. States and the District of Columbia. See U.S. Department of Agriculture, *Rural-Urban Continuum Codes Documentation*, (accessed Feb. 2024), <https://www.ers.usda.gov/data-products/rural-urban-continuum-codes/documentation/>.

<sup>81</sup> The random sampling was performed using the RAND function in Microsoft Excel. Each county with an RUCC of equal to or greater than 4 was assigned a random string of numbers, which was then ordered from Smallest to Largest. The first 50 counties in this randomly assigned order were chosen and matched with a school district in that county. For more information about the RAND function in Excel, see Microsoft, *Excel: RAND Function*, (accessed Mar. 4, 2024), <https://support.microsoft.com/en-us/office/rand-function-4cbfa695-8869-4788-8d90-021ea9f5be73>.

## APPENDIX B: OWNERSHIP STRUCTURES OF PAYMENT PROCESSORS

To generate Figure 1, the CFPB identified 20 lunch payment processing platforms in use at public schools in the United States. The CFPB gathered an initial list of platforms by searching for key words and phrases (including “online school lunch payment,” “lunch payment platform,” and “pay lunch online”) and examining the first five pages of search results. Platforms discovered through the construction of the school district sample (see Appendix A) were added to the list. The CFPB initially identified 26 platforms through these data collection methods. The CFPB then validated the list by, for each platform: (1) noting any public marketing statements by the processor or related companies confirming that they serve U.S. public schools; (2) finding U.S. public school districts that confirm usage of the platform on their websites; and (3) identifying any mergers or acquisitions with other platforms. The CFPB removed platforms that were not confirmed to serve U.S. public schools or have been merged into other existing platforms, paring the list down to 20 platforms. The CFPB then analyzed the ownership structures of the payment platforms to identify their parent and affiliate companies, both through examining their websites and the public securities filings of related entities.

EMS LINQ, Inc. owns two payment platforms that the CFPB identified—LINQ Connect, the third largest platform in the CFPB sample, and K-12 Payment Center.<sup>82</sup> The CFPB additionally found two lunch payment processors that have been consolidated into LINQ Connect: Titan, which EMS LINQ acquired in a \$75 million leveraged buyout in 2020; and MealsPlus, which was previously marketed as a “LINQ solution” but merged into LINQ Connect in 2021.<sup>83</sup> Some school district webpages and public resources continue to use these older product names, and as of February 2024 the website of MealsPlus continues to exist, though most of its buttons redirect to LINQ Connect. In its public marketing materials, LINQ claims to serve 30 percent of U.S. school districts through its suite of K-12 business products.<sup>84</sup>

---

<sup>82</sup> EMS LINQ, Inc., *LINQ Connect: Online Portal for K-12*, (accessed Feb. 2024), <https://www.linq.com/solutions/nutrition/district-nutrition/front-of-house/online-portal/>; K-12 Payment Center, *About Us*, (accessed Feb. 2024), <https://www.k12paymentcenter.com/Home/AboutUs>; MealsPlus, *Site Banner*, (accessed Feb. 2024), <https://www.mealsplus.com/welcome-to-meals-plus/>.

<sup>83</sup> Globe Newswire, *LINQ & TITAN School Solutions Announce Merger*, (Nov. 10, 2020), <https://www.globenewswire.com/en/news-release/2020/11/10/2123594/0/en/LINQ-TITAN-School-Solutions-Announce-Merger.html>; Stradling Law, *TITAN School Solutions Completes \$75 Million Acquisition by EMS LINQ*, (accessed Feb. 2024), <https://www.stradlinglaw.com/experience/titan-school-solutions-completes-dollar75-million-acquisition-by-ems-linq.html>; MealsPlus, *Site Banner*, (accessed Feb. 2024), <https://www.mealsplus.com/welcome-to-meals-plus/>; @MealsPlus, Twitter/X (Dec. 18, 2020), <https://twitter.com/MealsPlus/status/1339933615807971329>.

<sup>84</sup> EMS LINQ, Inc., *Home Page*, (accessed Feb. 2024), <https://www.linq.com/>.



Additionally, Constellation Software Inc., a Canadian conglomerate, owns N. Harris Computer Corporation, which owns Harris School Solutions, which operates two platforms: MealTime and EZSchoolPay.<sup>85</sup>

Five of the payment platforms identified by the CFPB are registered ISOs of Wells Fargo. These platforms include: MySchoolBucks, (a product of Heartland Payment Systems and a subsidiary of Global Payments Direct, Inc.),<sup>86</sup> PaySchools and SchoolPay (products of i3 Verticals), and MySchoolAccount and RevTrak (products of Vanco Payments).<sup>87</sup> Heartland Payment Systems is an ISO of Wells Fargo and the Bancorp Bank, and Global Payments Direct, Inc. is an ISO of Wells Fargo and BMO Harris Bank. i3 Verticals is an ISO of Wells Fargo, RBS Worldplay, Deutsche Bank, Merrick Bank, BMO Harris Bank, and Fifth Third Bank.<sup>88</sup> Vanco Payments is an ISO solely of Wells Fargo.<sup>89</sup>

The remaining 11 platforms identified by the CFPB do not appear to belong to companies offering multiple K-12 lunch payment processors, but many are owned by subsidiaries of large, publicly traded holding companies or marketed as part of a suite of K-12 information management products. Cybersoft Technologies owns SchoolCafé.<sup>90</sup> Roper Technologies, a publicly traded software and technological holding company, owns MyPaymentsPlus.<sup>91</sup> PCS Revenue Control Systems, a tech company specializing in K-12 nutrition software, owns PayPAMS.<sup>92</sup> Community Brands HoldCo LLC, a cloud-based software conglomerate, owns

---

<sup>85</sup> Harris School Solutions, *MealTime: School Nutrition Program Management Software*, (accessed Feb. 2024), <https://harrisschoolsolutions.com/products/mealtime-elementor/>; Harris School Solutions, *EZSchoolPay: Your Digital, Full-Cycle School Payment Software*, (accessed Feb. 2024), <https://harrisschoolsolutions.com/products/mealtime-elementor/>; Harris Computer, *Public Sector Solutions*, (accessed Feb. 2024), <https://www.harriscomputer.com/public-sector/>; Constellation Software, Inc., *Our Companies*, (accessed Feb. 2024), <https://www.csissoftware.com/our-companies>.

<sup>86</sup> MySchoolBucks, *Site Banner*, (accessed Feb. 2024), <https://www.myschoolbucks.com/>; Heartland Payment Systems, *Site Banner*, (accessed Feb. 2024), <https://www.heartland.us/about/about-us>; Global Payments Direct, Inc., *Site Banner*, (accessed Feb. 2024), <https://www.globalpayments.com/>.

<sup>87</sup> i3 Verticals, LLC, *Education Products and Site Banner*, (accessed Feb. 2024), <https://www.i3verticals.com/education/>; MySchoolAccount, *Site Banner*, (accessed Feb. 2024), <https://www.myschoolaccount.com/>; Vanco Payments, *RevTrak: Vanco's Online School Payment System and Site Banner*, (accessed Feb. 2024), <https://www.vancopayments.com/education/online-payment-processing>.

<sup>88</sup> i3 Verticals LLC, *Site Banner*, (accessed Feb. 2024), <https://investors.i3verticals.com/>.

<sup>89</sup> Vanco Payments, *RevTrak: Vanco's Online School Payment System and Site Banner*, (accessed Feb. 2024), <https://www.vancopayments.com/education/online-payment-processing>.

<sup>90</sup> Cybersoft Technologies, *About*, (accessed Feb. 2024), <https://www.cybersoft.net/about/>; SchoolCafé, *About*, (accessed Feb. 2024), <https://SchoolCafé12.com/about/>.

<sup>91</sup> MyPaymentsPlus is a product of Horizon Software, which operates as a unit of Roper Technologies (ROP: NYSE). See MyPaymentsPlus, *Site Banner*, (accessed Feb. 2024), <https://www.mypaymentsplus.com/welcome>; Horizon Software, *Online Payments: MyPaymentsPlus*, (accessed Feb. 2024), <https://horizonsoftware.com/online-payments>; Horizon Software, *About*, (accessed Feb. 2024), <https://horizonsoftware.com/about-us>.

<sup>92</sup> PCS Revenue Control Systems, *PayPAMS Family Portal*, (accessed Feb. 2024), <https://pcsrccs.com/pcs-solutions/parent-account-portal/>.

MySchoolWallet.<sup>93</sup> FocalTech, Inc., an information technology and e-commerce services provider, owns School Payment Portal.<sup>94</sup> Southwest Business Corporation, a diversified financial services company, owns e-Funds for Schools.<sup>95</sup> Computer Systems Design, Inc., a food and nutrition management software provider, owns LunchMoneyNow.<sup>96</sup> KEV Group, an international school activity fund management company, owns SchoolCash Online.<sup>97</sup> Two separate, independent companies named after their products own MealManage and CheddarUp.<sup>98</sup> Finally, PowerSchool Holdings, a publicly traded comprehensive K-12 software company, owns PowerLunch.<sup>99</sup>

---

<sup>93</sup> MySchoolWallet is a product of Diamond Mind, which is part of Community Brands HoldCo LLC. See Diamond Mind Inc., *Introducing MySchoolWallet*, (accessed Feb. 2024), <https://www.diamondmindinc.com/resources/product-videos/introducing-myschoolwallet/>; Community Brands, *Solutions: School Accounting*, (accessed Feb. 2024), <https://www.communitybrands.com/solutions/school-accounting/>; Community Brands, *Our Brands*, (accessed Feb. 2024), <https://www.communitybrands.com/company/our-brands/>.

<sup>94</sup> School Payment Portal is a product of LunchTime Software, which is an affiliate of Focal Tech Inc. See Focal Tech Inc., *Contact Us*, (accessed Feb. 2024), <https://www.focaltechinc.com/Contact-Us#contact>; School Payment Portal, *Site banner*, (accessed Feb. 2024), <https://www.schoolpaymentportal.com/Default.aspx>.

<sup>95</sup> e-Funds for Schools is a product of Magic-Wrighter, which was acquired by SWIVEL Transactions LLC in 2023, which is a subsidiary of Southwest Business Corporation (SWBC). See e-Funds for Schools, *About Us*, (accessed Feb. 2024), <https://efundsforschools.com/about-us/>; Magic-Wrighter, *About Us*, (accessed Feb. 2024), <https://www.magicwrighter.com/about-us/>; SWIVEL, *SWBC's SWIVEL Acquires Magic-Wrighter, Inc.* (Dec. 5, 2023), <https://www.getswivel.io/press-releases/swbcs-swivel-acquires-magic-wrighter-inc/>; Southwest Business Corporation, *Payment Solutions*, (accessed Feb. 2024), <https://www.swbc.com/payment-solutions>.

<sup>96</sup> Computer Systems Design, Inc., *Lunch Money Now*, (accessed Feb. 2024), <https://systemsdesignusa.com/SDwp/sd/software/lunch-money-now/>.

<sup>97</sup> KEV Group, *Products*, (accessed Feb. 2024), <https://kevgroup.com/products/>; SchoolCash Online, *Home page*, (accessed Feb. 2024), <https://www.schoolcashionline.com/>.

<sup>98</sup> MealManage, *About*, (accessed Feb. 2024), <https://www.mealmanage.com/about.php>; CheddarUp, *About*, (accessed Feb. 2024), <https://www.cheddarup.com/about-cheddar-up/>.

<sup>99</sup> PowerSchool offers K-12 information management portals that integrate other lunch payment processors. The CFPB identified many lunch payment processors that offer software integrations with PowerSchool's online portal (for which they must pay an annual fee proportionate to their user base). PowerLunch is the user-facing name of the portal's lunch payment module. See PowerSchool Holdings, Inc., *Investor Relations*, (accessed Feb. 2024), <https://investors.powerschool.com/home/default.aspx>; U.S. Securities and Exchange Commission, "Letter from PowerSchool Holdings, Inc., re: Draft Registration Statement on Form S-1, CIK No. 0001835681," *EDGAR Archives*, (Dec. 22, 2020), <https://www.sec.gov/Archives/edgar/data/1835681/000095012321000843/filename1.htm> at p. 12.